



## Accommodation Sheet

### General information

Accommodation name	Hotel Sina Astor
Typology	Hotel
Address	Viale G. Carducci 54
City	Viareggio
Contacts	Tel + 39 0584 50301 Email <a href="mailto:sinaastor@sinahotels.com">sinaastor@sinahotels.com</a>
Website	<a href="http://www.sinahotels.com">www.sinahotels.com</a>
WCAG 2.1 compliant accessible website	NO
Online bookings	YES
Short description	A historic hotel in the city of Viareggio, recently renovated, the Hotel Astor overlooks the seafront of Viareggio.

**TESTED AND REVIEWED BY:** [Handy Superabile Social Promotion Association](#) in 2024

**Please note** The following information refers to the date of verification shown at the bottom of each sheet. The Association is not responsible for any significant changes made by the property after the visit.





---

## Summary

Accommodation sheet .....	1
General information .....	1
Arrival at the property.....	3
How to reach the property.....	3
Pathway from the private/public car park to the entrance .....	4
Entrance to the structure.....	5
Hall - Reception .....	6
Rooms/apartments .....	8
Rooms/apartments adapted for guests with reduced mobility.....	8
Toilet facilities in the guest room for guests with reduced mobility.....	12
Bar/restaurant .....	16
Internal pathways and common services .....	19
Internal pathways.....	19
Communal toilets .....	19
Swimming pool .....	20
Wellness center - Spa.....	21
Meeting.....	22
Medical practices/healthcare facilities.....	23





## Arrival at the property

### How to reach the property

<b>By car</b>	<p>from the north: From the north and from the A1 motorway, take the A11 Firenze Mare motorway in the direction of Lucca-Pisa. After Lucca, follow the signs for Viareggio, continue for another 18 km and exit at Viareggio.</p> <p>From Genoa and the A12 motorway, take the Viareggio exit.</p> <p>from the south: From the south and from the A1 Rome-Florence highway, take the A11 Firenze Mare highway in the direction of Lucca-Pisa north. After Lucca, follow the signs for Viareggio and continue for another 18 km.</p> <p>From the motorway exit, follow the signs for Marco Polo and then for the sea.</p>
By plane	G. Galilei Airport Pisa
Assistance service for people with disabilities	YES
Embarkation/disembarkation of passengers with reduced mobility	with courtesy chair and ambulift /Finger. Full assistance is provided on departure and arrival.
Tactile paths for the blind and visually impaired	YES, there are LOGES routes complete with tactile maps to facilitate movement.
There is a toilet room accessible with grab handles	YES
Presence of shuttle to station	YES. Automated ecological shuttle "PEOPLE MOVER" to Pisa central station.





By train	
Nearest station	Name Viareggio
Assistance service for people with disabilities	YES
Eventual notes	Information on disabled accessibility: the Viareggio station is equipped with a forklift and dedicated assistance service for disabled guests. To request the assistance service, passengers with reduced mobility can contact the railway company with which they have chosen to travel, or send an e-mail (at least 24 hours in advance) to one of the 14 Sala Blu or go directly to one of the 14 Sala Blu or call the single national number 199 30 30 60 connected to the 14 Sala Blu and active every day, holidays included, from 6:45 am to 9:30 pm

### Pathway from the private/public car park to the entrance

Presence of private parking	equipped with covered parking accessible via a fairly steep ramp, or from the inside, via two flights of stairs.
Presence of parking space reserved for people with disabilities	YES.
Public parking nearby	YES
Type of flooring in the public car park	asphalt
Presence of parking space reserved for people with disabilities in the public parking lot	YES
Describe the route from the car park to the entrance and any critical issues	Obstacle-free
Distance from parking to entrance	a few meters

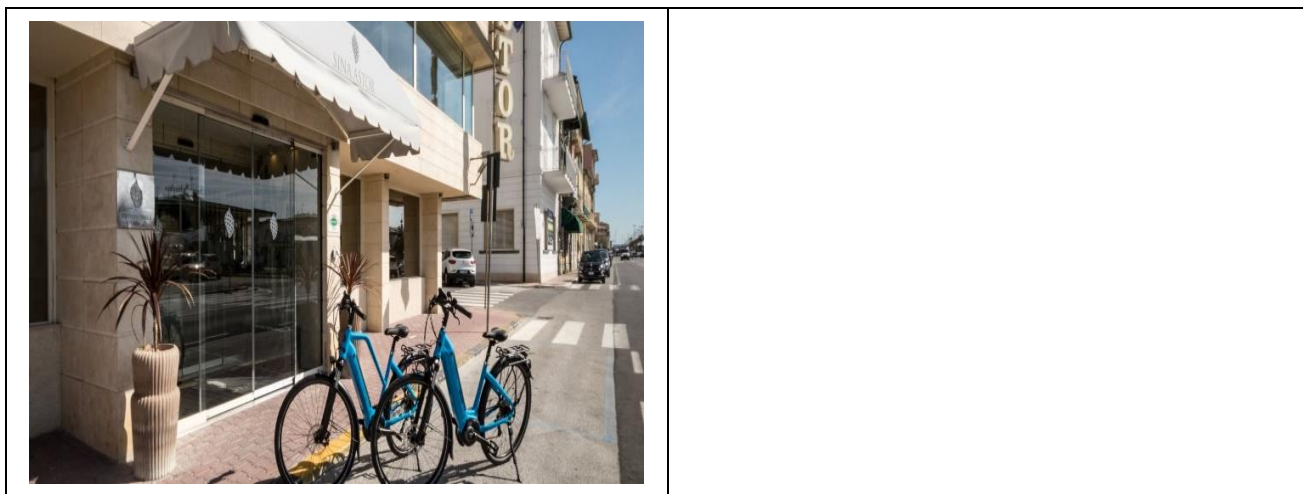




### Entrance to the structure

There is an accessible entrance	YES main entrance
How to access the structure	<input checked="" type="checkbox"/> flat <input type="checkbox"/> via stairlift
Type of entrance door	Automatic
Useful width of door/entrance gate	Above 90 cm
There are indicators and tactile maps	NO
	





**Hall - Reception**

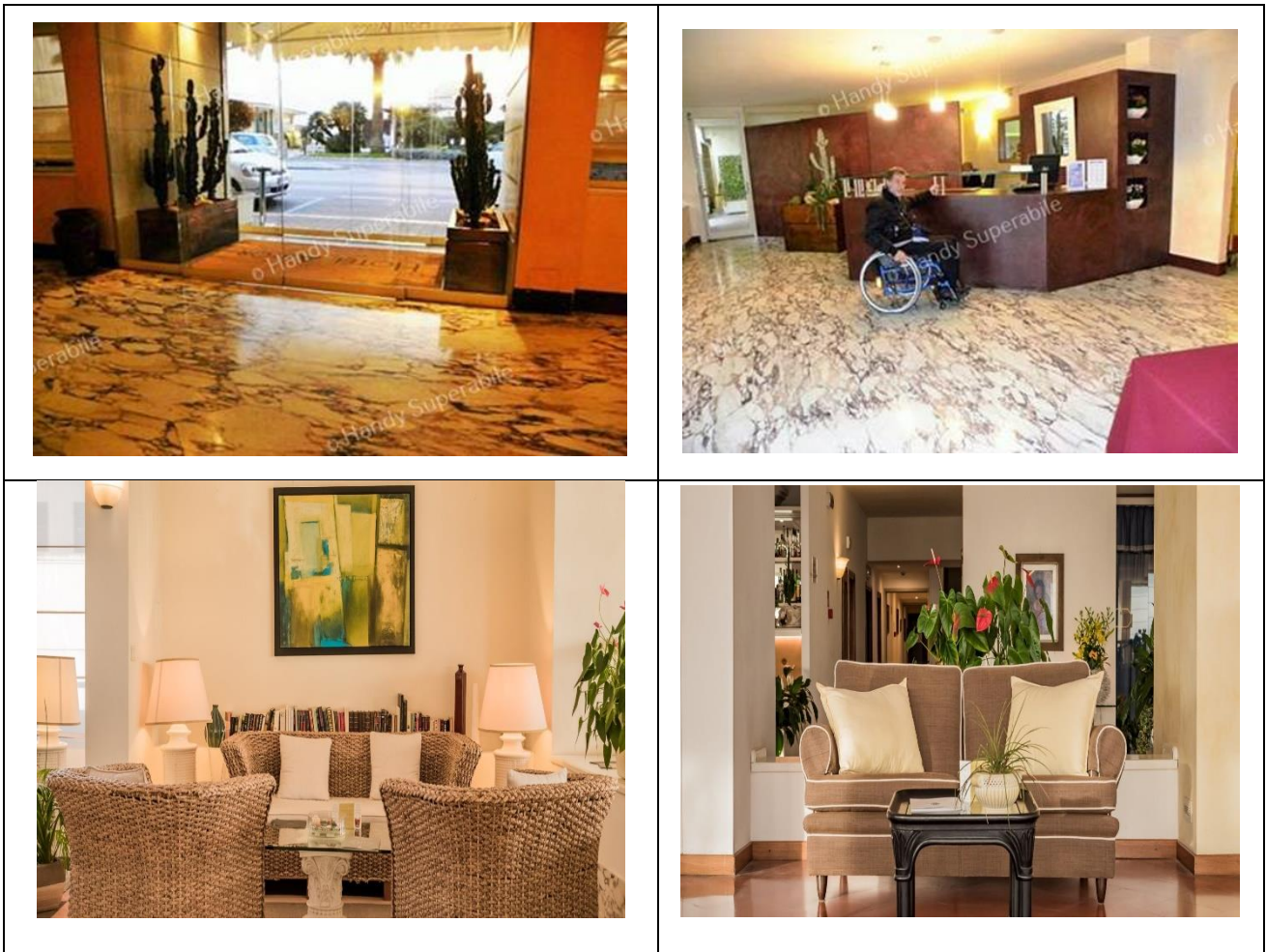
How to reach it from the entrance	flat
Reception desk height	with a lowered bench part of less than 100 cm
Presence of multilingual staff	YES
Type of information material	<input type="checkbox"/> YES with maps/tactile signals <input checked="" type="checkbox"/> YES with brochure
Initial assistance is provided for visitors with disabilities	<input checked="" type="checkbox"/> YES with orientation tour of the structure <input checked="" type="checkbox"/> YES with room accompaniment <input type="checkbox"/> YES with porter service
The following aids are provided for visitors with disabilities	<input type="checkbox"/> manual wheelchair <input type="checkbox"/> Crutches <input type="checkbox"/> Comfortable shower chair
The staff followed a training course on welcoming people with different disabilities	NO



Project promoted by



**Regione Toscana**



Project carried out with the contribution of the



**Presidenza del  
Consiglio dei Ministri**  
Ministro per la disabilità



## Rooms/apartments

### Rooms/apartments adapted for guests with reduced mobility

Number and type of rooms/apartments equipped/usable by people with reduced mobility	<p>Room adapted for guests with superior reduced mobility: Double. It can become triple if necessary.</p> <p>Room adapted for guests with reduced mobility suite: double, also has a sofa bed.</p> <p>Room adapted for guests with reduced mobility junior suite: double, also has a sofa bed.</p> <p>Room adapted for guests with reduced mobility De luxe. Double, it also has a sofa bed.</p>
Access to lobby rooms	<input checked="" type="checkbox"/> flat and by elevator door width 91 cm, cabin width 98 cm, cabin depth 123 cm, support handles
Access to the superior room	<input checked="" type="checkbox"/> flat
Usable width of entrance door	77 cm
Bed type and height	double bed 55 cm high
Free spaces on the sides of the bed	<p>left 69 cm</p> <p>right 55 cm</p> <p>frontal Above 90 cm</p>
Cabinet Type	accessible
Free space under the desk	Not detected
In-room options are available	<input checked="" type="checkbox"/> safe <input checked="" type="checkbox"/> minibar





	<input type="checkbox"/> Water Kettle <input type="checkbox"/> Iron
There is a terrace/balcony/garden (useful door width)	balcony
How to access	via 20 cm threshold
Access to the suite room	<input checked="" type="checkbox"/> flat
Usable width of entrance door	77 cm
Bed type and height	double bed
Free spaces on the sides of the bed	right Above 90 cm frontal Above 90 cm
Cabinet Type	accessible
Free space under the desk	Not detected
In-room options are available	<input checked="" type="checkbox"/> safe <input checked="" type="checkbox"/> minibar <input type="checkbox"/> Water Kettle <input type="checkbox"/> Iron





<p>Access to the junior suite room</p>	<p><input checked="" type="checkbox"/> flat</p>
<p>Usable width of entrance door</p>	<p>74 cm</p>
<p>Bed type and height</p>	<p>double bed 50 cm high</p>
<p>Free spaces on the sides of the bed</p>	<p>left Above 90 cm right Above 90 cm frontal Above 90 cm</p>
<p>Cabinet Type</p>	<p>accessible</p>
<p>Free space under the desk</p>	<p>Not detected</p>
<p>In-room options are available</p>	<p><input checked="" type="checkbox"/> safe <input checked="" type="checkbox"/> minibar <input type="checkbox"/> Water Kettle <input type="checkbox"/> Iron</p>
<p>There is a terrace/balcony/garden (useful door width)</p>	<p>Balcony with sea view</p>
<p>How to access</p>	<p>by means of a threshold 5 cm</p>





<p>Access to the deluxe room</p>	<p><input checked="" type="checkbox"/> flat</p>
<p>Usable width of entrance door</p>	<p>77 cm</p>
<p>Bed type and height</p>	<p>double bed 50 cm high</p>
<p>Free spaces on the sides of the bed</p>	<p>left 65 cm right 72 cm frontal Above 90 cm</p>
<p>Cabinet Type</p>	<p>accessible</p>
<p>Free space under the desk</p>	<p>Not detected</p>
<p>In-room options are available</p>	<p><input checked="" type="checkbox"/> safe <input checked="" type="checkbox"/> minibar <input type="checkbox"/> Water Kettle <input type="checkbox"/> Iron</p>





### Toilet facilities in the guest room for guests with reduced mobility

Access to the superior room	flat
Usable width of the entrance door	80 cm
Toilet height	47 cm
Toilet seat with open front tooth	YES
Support handles	to the right of the toilet
Flexible shower on the side of the toilet	NO
Free space on the sides of the toilet	left Above 90 cm right Not detected frontal Above 90 cm
Electric doorbell/telephone on the side of the toilet	Not detected
Washbasin with space underneath for wheelchair approach	65 cm
Height from the ground lower edge mirror	Not detected





<p>Accessible shower available for guests with reduced mobility</p>	<p>NO</p>
<p>Eventual notes</p>	<p>bathtub with shower h=cm 53 equipped with grab bar</p>
<p>Access to the room suite</p>	<p>flat</p>
<p>Usable width of the entrance door</p>	<p>80 cm</p>
<p>Toilet height</p>	<p>47 cm</p>
<p>Toilet seat with open front tooth</p>	<p>YES</p>
<p>Support handles</p>	<p>to the left of the toilet</p>
<p>Flexible shower on the side of the toilet</p>	<p>NO</p>
<p>Free space on the sides of the toilet</p>	<p>left 46 cm right Above 90 cm frontal Above 90 cm</p>
<p>Electric doorbell/telephone on the side of the toilet</p>	<p>Not detected</p>
<p>Washbasin with space underneath for wheelchair approach</p>	<p>65 cm</p>
<p>Height from the ground lower edge mirror</p>	<p>Not detected</p>





<p>Accessible shower available for guests with reduced mobility</p>	<p>NO</p>
<p>Eventual notes</p>	<p>Bathtub with shower height 53 cm with grab bar</p>
<p>Access to the junior suite room</p>	<p>flat</p>
<p>Usable width of the entrance door</p>	<p>80 cm</p>
<p>Toilet height</p>	<p>50 cm</p>
<p>Toilet seat with open front tooth</p>	<p>YES</p>
<p>Support handles</p>	<p>Choose an item.</p>
<p>Flexible shower on the side of the toilet</p>	<p>Choose an item.</p>
<p>Free space on the sides of the toilet</p>	<p>left Above 90 cm right 65 cm frontal approx. 65 cm</p>
<p>Electric doorbell/telephone on the side of the toilet</p>	<p>Not detected</p>
<p>Washbasin with space underneath for wheelchair approach</p>	<p>65 cm</p>





<p>Accessible shower available for guests with reduced mobility</p>	<p>NO</p>
<p>Eventual notes</p>	<p>bathtub with shower h=cm 53, equipped with grab bar</p>
<p>Access to the deluxe room</p>	<p>flat</p>
<p>Usable width of the entrance door</p>	<p>80 cm</p>
<p>Toilet height</p>	<p>47 cm</p>
<p>Toilet seat with open front tooth</p>	<p>YES</p>
<p>Support handles</p>	<p>to the right of the toilet</p>
<p>Flexible shower on the side of the toilet</p>	<p>YES</p>
<p>Free space on the sides of the toilet</p>	<p>left Lacking Sufficient Space right cm 80 frontal Above 90 cm</p>
<p>Electric doorbell/telephone on the side of the toilet</p>	<p>Not detected</p>
<p>Washbasin with space underneath for wheelchair approach</p>	<p>60 cm</p>
<p>Height from the ground lower edge mirror</p>	<p>not sufficient for use by a person in a wheelchair</p>







<p>Accessible shower available for guests with reduced mobility</p>	<p>NO</p>
<p>Eventual notes</p>	<p>bathtub with shower h=cm 53, equipped with grab bar</p>

## Bar/restaurant

<p>Type of venue</p>	<p>Bar</p>
<p>Access to the premises</p>	<p>From the reception you can reach the upper floor (floor "A") by elevators (net door opening: 91 cm; depth: 123 cm; width: 98 cm), equipped with a support handle, one of which, on this floor alone, has an exit space of 70 cm. Once on the upper floor (floor "A"), and after passing a ramp, you reach the Bar, accessible to wheelchair users.</p>
<p>Useful width of door/entrance gate</p>	<p>Above 90 cm</p>
<p>Bar counter height</p>	<p>Above 100 cm</p>
<p>Types of tables</p>	<p>Bar set up with armchairs and sofas</p>
<p>Multilingual menu</p>	<p>YES</p>
<p>Menu with app</p>	<p>NO</p>






Braille menu	NO
Table service for people with disabilities	YES
A customer with reduced mobility can always reserve the same table	YES
There are toilets that can be used by a guest with reduced mobility (see "accessible toilets in the internal paths and common services)	NO
	
Type of venue	Restaurant
Access to the premises	Located on the second floor reachable by elevator
Useful width of door/entrance gate	Above 90 cm
Types of tables	with central support
Space under floor tables	sufficient
Availability of high chairs for babies	YES on request
Multilingual menu	YES
Menu with app	NO
Braille menu	NO
Table service for people with disabilities	YES
Availability of foods for celiacs	<input type="checkbox"/> bread, pasta, biscuits, ice cream <input type="checkbox"/> pre-packaged foods
There are coffee and milk dispensers	NO table service is available

Project carried out with the contribution of the





A customer with reduced mobility can always reserve the same table	YES
There are toilets that can be used by a guest with reduced mobility (see "accessible toilets in the internal paths and common services)	NO
There is an area reserved for lunch for younger guests	NO
A fully equipped baby feeding service is available	YES on request
	
The restaurant has an outdoor veranda / dehors	YES with flat access
Types of tables	with central support
Space under floor tables	sufficient





## Internal pathways and common services

### Internal pathways

Indicate whether the paths connecting with the common areas are flat or with ramps or steps, in addition to those already described	The large common areas are accessible to wheelchair users. Full accessibility also along the corridors leading to the elevators and the beauty area.
From the visited room to the common areas there are maps and tactile signs for the blind	NO only indications

### Communal toilets

Location of the venue	Near the lobby/reception area
How to access the premises	flat
Usable width of the entrance door	78 cm
Toilet height	47 cm
Toilet seat with open front tooth	YES
Support handles	to the left of the toilet
Flexible shower on the side of the toilet	YES
Free space on the sides of the toilet	left Above 90 cm right Limited frontal Above 90 cm
Electric doorbell/telephone on the side of the toilet	NO
Washbasin with space underneath for wheelchair approach	YES
Height from the ground lower edge mirror	Not detected
Baby changing table	NO





## Swimming pool

The property has a swimming pool	YES on floor A reachable by elevator via a 200 cm long ramp with a slope such as to require the help of a companion for a guest with reduced mobility
Pool with heated water	YES
Access to the swimming pool	Flat
Useful width of the entrance gate	Above 90 cm
Access to the pool	with ladder
Bathing aids for guests with reduced mobility	not present
Tank depth	140 cm
Height of the pool edge-water level	infinity
In the pool area there is a shower	Not detected





<p>Eventual notes</p>	<p>To the side of the pool is the accessible gym.</p>

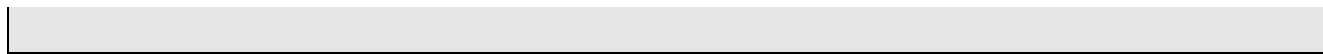
**Wellness center - Spa**

<p>There is a wellness center / Spa in the structure</p>	<p>YES</p>
<p>How to access</p>	<p>Planned mobile ramp that allows you to overcome a couple of steps</p>
<p>Usable width of the entrance door</p>	<p>Choose an item.</p>
<p>At the wellness center/Spa there are the following activities</p>	<ul style="list-style-type: none"> <li><input checked="" type="checkbox"/> sauna Choose an item.</li> <li><input checked="" type="checkbox"/> Turkish bath Choose an item.</li> <li><input checked="" type="checkbox"/> massage room Choose an item.</li> <li><input checked="" type="checkbox"/> Tub Choose an item.</li> </ul>
<p>There is an accessible changing room</p>	<p>Not detected</p>

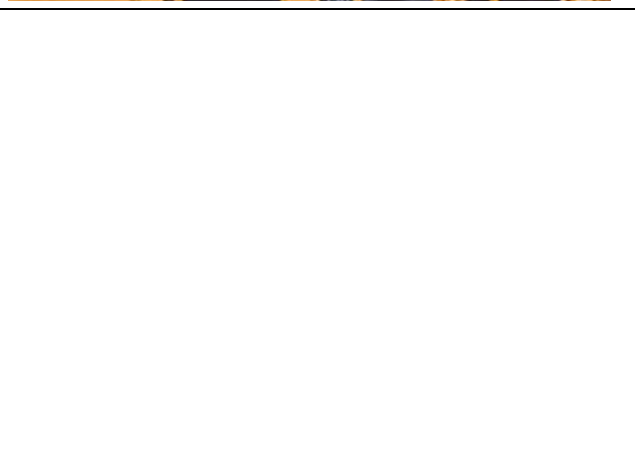
**Meeting**

Project carried out with the contribution of the





There is a meeting room in the structure	SI num 3
How to access	Flat
Usable width of the entrance door	Above 90 cm
There is an accessible changing room	Not detected
Eventual notes	Sala Alcione and Ermione can be connected.





## Medical practices/healthcare facilities

Hospitals near the property	<p>Versilia Hospital Via SS 1 335 Lido di Camaiore (LU) Tel +39 0584 6051 Distance 5.7 km</p> <p>Civil Hospital, Usl Toscana nord ovest presidio territoriale G. Tabarracci Via A. Fratti 530 Viareggio (LU) Tel +39 0584 6059320/6059219</p>
Any dialysis facilities	<p>Cisanello Hospital Pisa. Distance 23 km In the period June-September holiday dialysis service with availability of n. 6 beds; The treatments will be divided into three days a week (Monday, Wednesday and Friday) in the evening from 18.00 to 24.00 Phone +39 050 997250/997253/997256 call from 8.00 a.m. to 2.00 p.m. Email <a href="mailto:nefrotrap.pisa@ao-pisa.toscana.it">nefrotrap.pisa@ao-pisa.toscana.it</a></p>
Other healthcare facilities	<p>Croce Verde Viareggio Corso G. Garibaldi 208 Viareggio (LU) Tel +39 0584 30885</p>

